

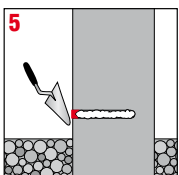
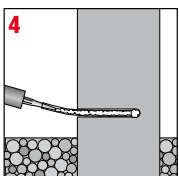
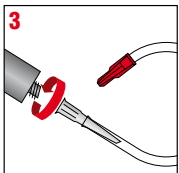
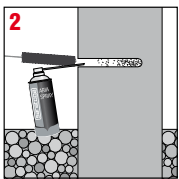
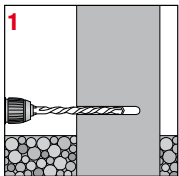
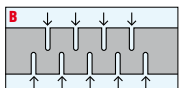
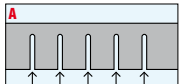
MURO ASCIUTTO

CHEMICAL BARRIER AGAINST RISING DAMP

MURO ASCIUTTO is the specific product which creates an horizontal chemical barrier in the masonry and prevents against problems due to rising damp.

MURO ASCIUTTO is suitable for any kind of masonry: hollow bricks, concrete, stone, brick blocks, tuff stone and bricklaying. It is a creamy white product, solvent-free, with very high concentration of silanes. When applied, it links itself to the moisture which covers the capillaries' walls, following the capillaries and making them water resistant (it creates a homogeneous barrier around the holes, preventing the moisture to rise).

APPLICATION:



1) Remove the plaster at least 5 cm from the floor, in order to identify the mortar between the bricks: in the joint between the first row of bricks, run a series of horizontal holes with following dimensions: diameter 16 mm, depth 5 cm less than the thickness of the wall, distance between the holes (one to another) 10 cm (figure A). In case it was not possible to make all the holes on one side of the wall, drill the holes on both sides, getting to a depth of about 50% of the wall thickness; remember to drill at the same height horizontally staggering the holes (figure B). In any case it is recommended to make sure that the holes are not carried out in the presence of cables and pipelines.

2) Clean the holes from dust with compressed air or a brush of appropriate size.

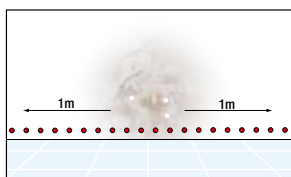
3) Cut the plunger of the cartridge and screw on the nozzle which is mounted on the transparent tube.

4) Remove the cap and insert the tube as far as the very end of the hole: extrude **MURO ASCIUTTO** from the very end and moving back, using a normal sealant gun or a compressed air gun.

5) Fill in the holes with a normal cement mortar, or with Saratoga Z66 Stucco Leggero.

6) As soon as the cream has been absorbed by the capillaries, just after a few days, you can completely fill the hole with a non-shrink grout in order to eventually restore the pre-existing load-bearing capacity.

7) Even after one or two weeks, you can already apply an aerating plaster on the wall (aerating, in order to allow the complete drying of the soaked parts).



Partial treatment of one wall:
Go with the treatment 1 meter rightmost and 1 meter leftmost.

In the case of partial treatment of one wall or of a limited area, proceed with the application 1 meter furtherly the part to be treated (1 meter rightmost and 1 meter leftmost), so as to create an extended and uniform barrier to rising damp.

SUITABLE FOR ANY KIND OF WALL:



BRICK BLOCKS



CONCRETE



STONE



HOLLOW BLOCKS



TUFF STONE



BETON GAS



MIXED MASONRY



On the basis of our knowledge of the polymers inside **MURO ASCIUTTO** and of their durability, we believe **MURO ASCIUTTO** is effective for at least **20 years**.

TIMINGS: The product takes a few months to carry out its work effectively. The drying time of the masonry instead may take more time, even more than one year. This timings depend on many different variables, including type and wall thickness, kind of humidity, temperature, presence of plaster, ventilation, etc.... In case of deteriorated plaster and/or plaster saturated with salts, it is necessary to completely remove the plaster themselves, leaving the bricks exposed; when dry, apply an aerating plaster.

Indicative consumption: number of cartridges per linear meter depending on the thickness of the wall:

DESCRIPTION	PACK SIZE	PRODUCT CODE	BOX QTY.	EAN CODE
Cartridge	ml. 300	85.650.001	6	8 005860 856509

Cm wall thickness	25	30	40	50	60
Number of cartridges for linear meter	1,5	2	2,5	3,5	4